



Fiscal Year '20-'21  
Operating & Capital  
Budget

# South Carolina Code of Law Chapter 25, Section 58-25-70

- Requires submittal of annual operating and capital budget proposed for each fiscal year to the Board of Directors and member municipalities and counties
- The following proposed operating and capital budget document is to achieve the intent of this section



# Budget Summary

The total proposed budget for FY 2020-2021

- Revenues ~\$34.02 million. An increase of 12%.
  - These figures are exclusive of the ~\$6.5 funding from CARES Act in FY'19-'20
- Expenses ~ \$33.13 million. An increase of 13%.

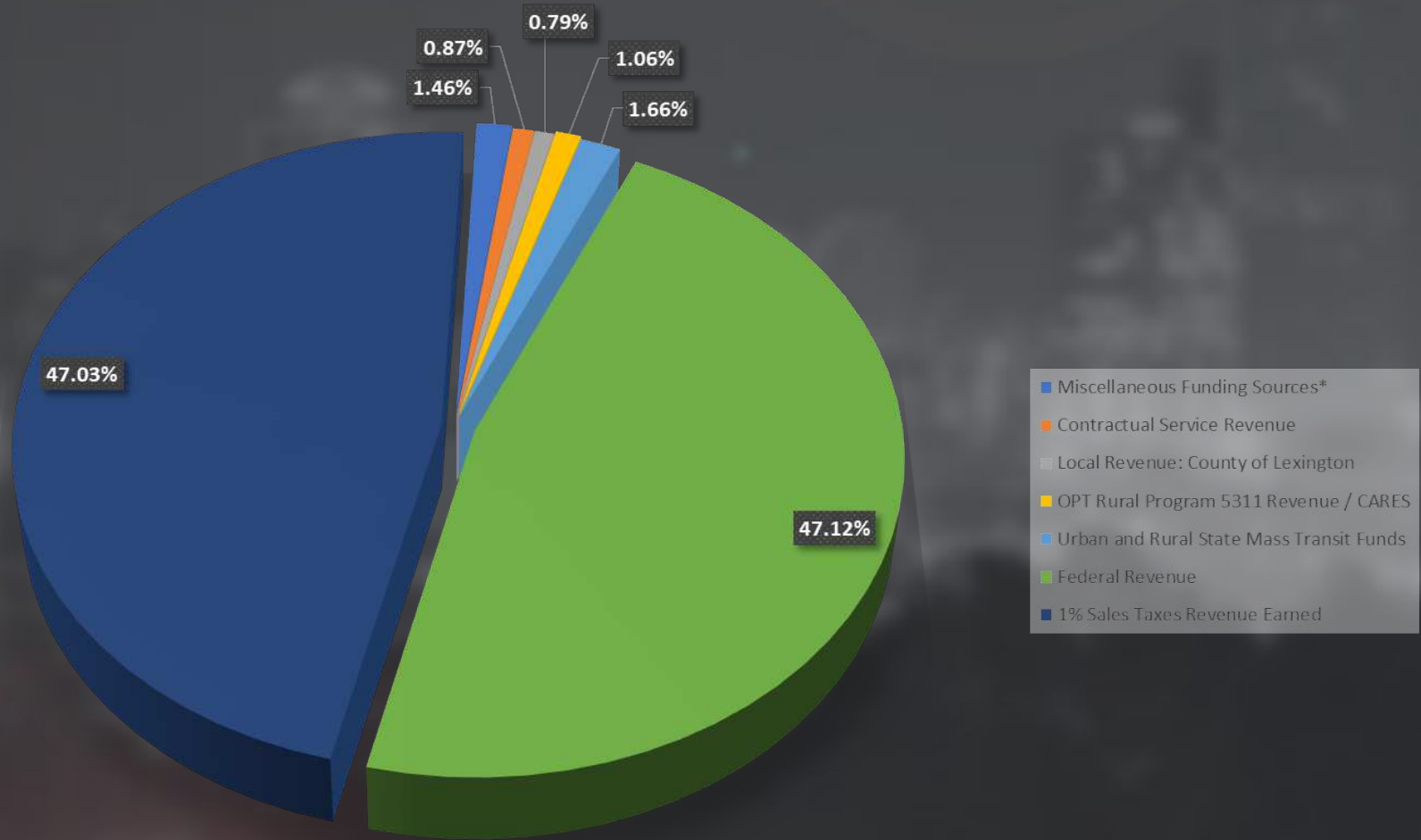


# Revenue Summary

Account Description	Approved Budget FY2020	Proposed Budget FY 2021	Variance "%"	% of Revenue
Passenger Fares Revenue	2,496,522	-	-100%	0.00%
CDBG Grants	100,000	-	-100%	0.00%
SCDOT: OPT Rural 5339	180,000	-	-100%	0.00%
Insurance Claim	10,000	-	-100%	0.00%
Management Fee Revenue	10,400	-	-100%	0.00%
Gain (Loss) Sale/Disposal of Asset	500	600	20%	0.00%
RTAP Revenue	3,700	3,000	-19%	0.01%
Rental Income	9,620	9,720	1%	0.03%
Miscellaneous Income	30,000	30,000	0%	0.09%
Hospitality Tax	21,000	44,167	110%	0.13%
Fuel Tax Refunds	50,000	55,000	10%	0.16%
SCDOT-OPT Planning	-	54,519	0%	0.16%
Advertising Revenue	15,000	111,850	646%	0.33%
Interest Income	180,000	189,000	5%	0.56%
Contractual Service Revenue	275,000	297,622	8%	0.87%
Local Revenue: County of Lexington	351,391	267,520	-24%	0.79%
OPT Rural Program 5311 Revenue / CARES	146,536	359,716	145%	1.06%
Urban and Rural State Mass Transit Funds	567,919	565,917	0%	1.66%
Federal Revenue	7,026,466	16,031,003	128%	47.12%
1% Sales Taxes Revenue Earned	18,855,298	16,000,000	-15%	47.03%
<b>TOTAL REVENUES</b>	<b>30,329,352</b>	<b>34,019,634</b>	<b>12%</b>	<b>100%</b>



# Revenue Funding Sources



\*represents revenue sources less than .05%

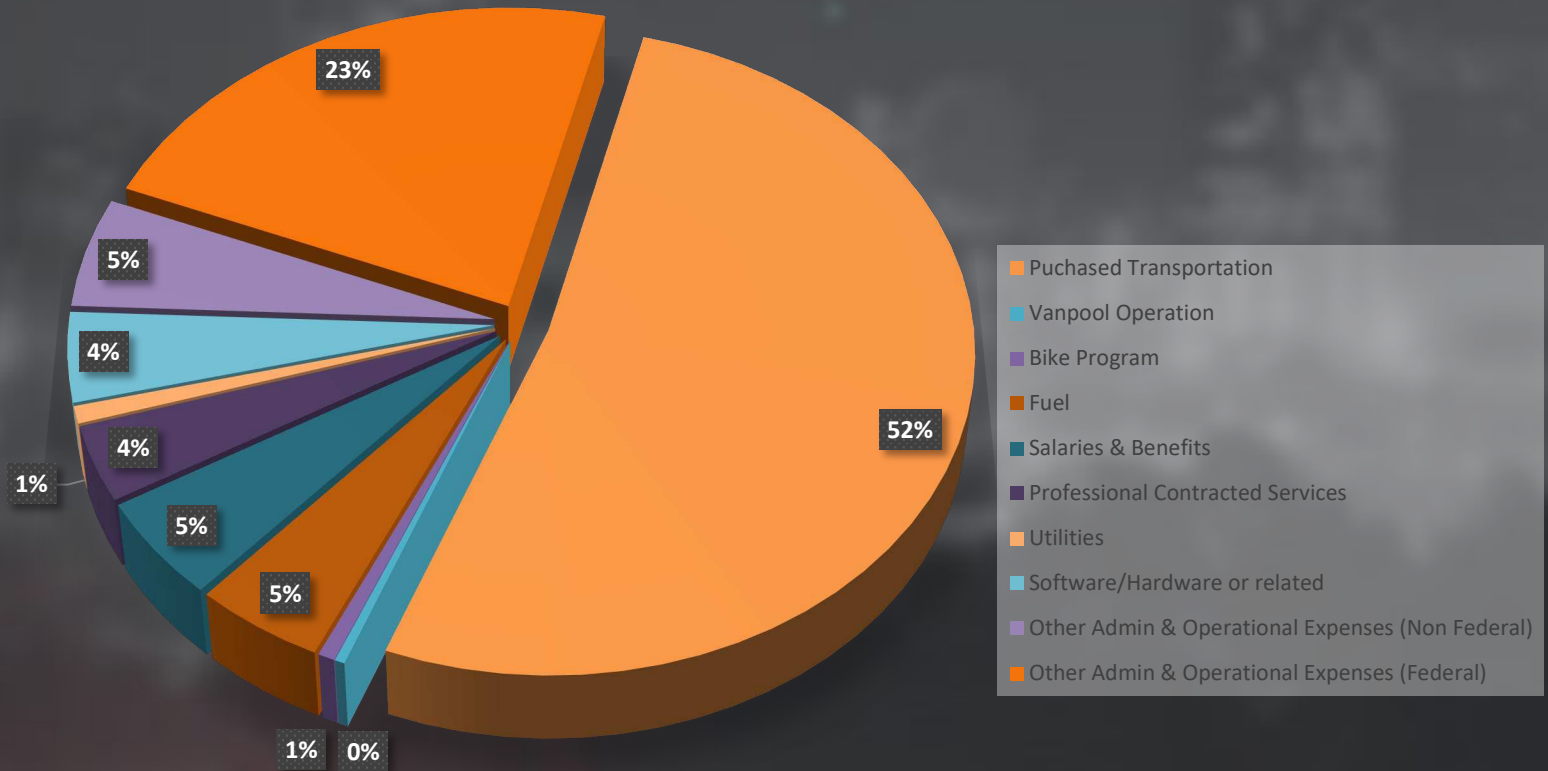


# Operations & Capital Expense Summary

Account Description	Approved Budget FY2020	Proposed Budget FY 2021	Variance "\$"	Variance "%"	% of Total Expense
Purchased Transportation	16,560,072	17,230,008	669,936	4%	52%
Vanpool Operation	120,000	120,000	-	0%	0%
Bike Program	250,000	200,000	(50,000)	-25%	1%
Fuel	1,915,000	1,551,583	(363,417)	-23%	5%
Salaries & Benefits	1,082,129	1,655,588	573,459	35%	5%
Professional Contracted Services	963,260	1,250,787	287,527	23%	4%
Utilities	261,828	286,300	24,472	9%	1%
Software/Hardware or related	380,000	1,486,500	1,106,500	74%	4%
Other Admin & Operational Expenses (Non Federal)	1,667,598	1,827,686	160,088	9%	6%
Other Admin & Operational Expenses (Federal)	6,564,260	7,522,224	957,964	13%	23%
	29,764,147	33,130,677	3,366,530		100%



# Expenses Ratio



# Key Points

- Budget assumes no fares will be collected
  - Implement fare free to rebuild ridership
  - FTA CARES Act funding will cover the costs of the lack of fares
- Reduce fixed route service hours to 158,000 from 175,000
  - 15,000 revenue hours for flex routes
  - 35,000 revenue hours for DART paratransit services

*all conditional upon all member agencies approving the operating and capital budget as per State Law*





# Key Points continued

- A new operations and maintenance contractor, costs are expected to increase overall 15%.
  - Increase due to the costs of the new contractor, plus the external costs not a part of that new contract, which includes customer service, landscaping, security, janitorial, pest control, paratransit software, fuel for non-revenue vehicles and long distance telephone calls.



# Key Points continued

- Richland County Transportation Penny makes up approximately (~)63.27% of The COMET's revenues
  - Projecting a decrease in Penny sales tax funds of about 15% to ~ \$16,000,000 as a result of COVID-19.
- Lexington County contribution projected to increase 10%
  - This include requests to Towns of Chapin, Batesburg-Leesville and Lexington as well as Newberry County.



# Funding Snapshot

## Operating

### Local

Lex. Cty: \$269,000

Richland County  
Penny: \$16  
million

Farebox:  
\$1.7  
million

State  
\$570K (Fuel)

\$150,000  
rural

## Capital

Federal  
match  
(20%)

Fare Free - CARES Act  
funding to replace funding

Federal  
\$5-6 million

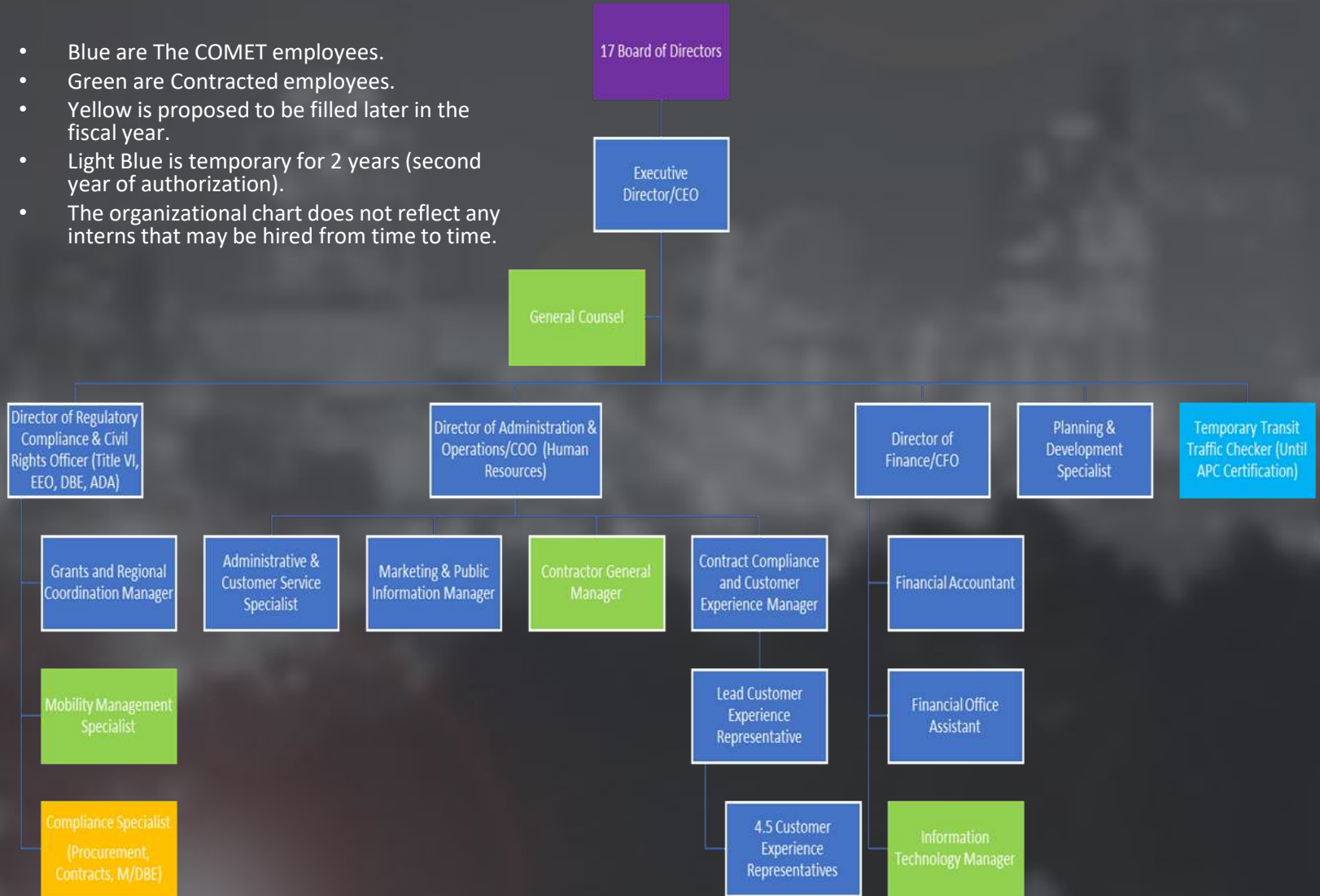
# Key Points continued

- Plans to increase staff by 6 new positions:
  - Lead Customer Experience Representative
  - Customer Experience Representative (4.5)
  - Procurement and Contracts Specialist or Manager (filled at a later date)
- Reclassification of Transit Operations Specialist to Customer Experience & Contract Compliance Manager



# The COMET Organizational Chart

- Blue are The COMET employees.
- Green are Contracted employees.
- Yellow is proposed to be filled later in the fiscal year.
- Light Blue is temporary for 2 years (second year of authorization).
- The organizational chart does not reflect any interns that may be hired from time to time.



# The COMET Services

The COMET provides countywide public transit services on

- 35 fixed routes
- Five rural ReFlex services, with a vanpool service, subsidy programs with Lyft and Uber
- 8 COMET sponsored BikeShare stations in Columbia downtown area
- DART ADA complementary paratransit service throughout Richland and eastern Lexington Counties

The COMET transports approximately 2.7 million passenger trips a year on a fleet of 81 buses and vans, and 2 trolleys.

The COMET operates Monday-Friday between 4:45 a.m. and 12 midnight, Saturday between 5:45 a.m. and midnight and Sundays between 5:45 a.m. and 11:45 p.m.



# Expected Operations Projects

- Transit operations, marketing and administration in Richland and Lexington Counties.
- Security on buses, transit center and bus stops.
- Vanpool program.
- Preventative maintenance of transit buses and facilities.
- Lyft/Uber subsidy, Blue Bike, volunteer transportation, microtransit options, carshare pilot, health care access shuttle and subsidized taxi scrip program.
- Free rides for ALL passengers.



# Expected Capital Projects

- New Intelligent Transportation System (ITS) with automatic passenger counters (APC).
- Final payment of 8 bikeshare stations in Downtown Columbia.
- Passenger amenities: bus shelters, benches and bike racks.
- Website redesign.
- Mobility management.
- Training and development of staff.
- Computer hardware and software.
- Planning Department staff.
- Trapeze paratransit software servers, passenger portal, passenger notification and upgrade to PASS v.20.
- Replacement of Admin Bldg. HVAC system.
- Repaving of the bus parking lot due to cracking.
- Engineering and design support.





# Future of The COMET

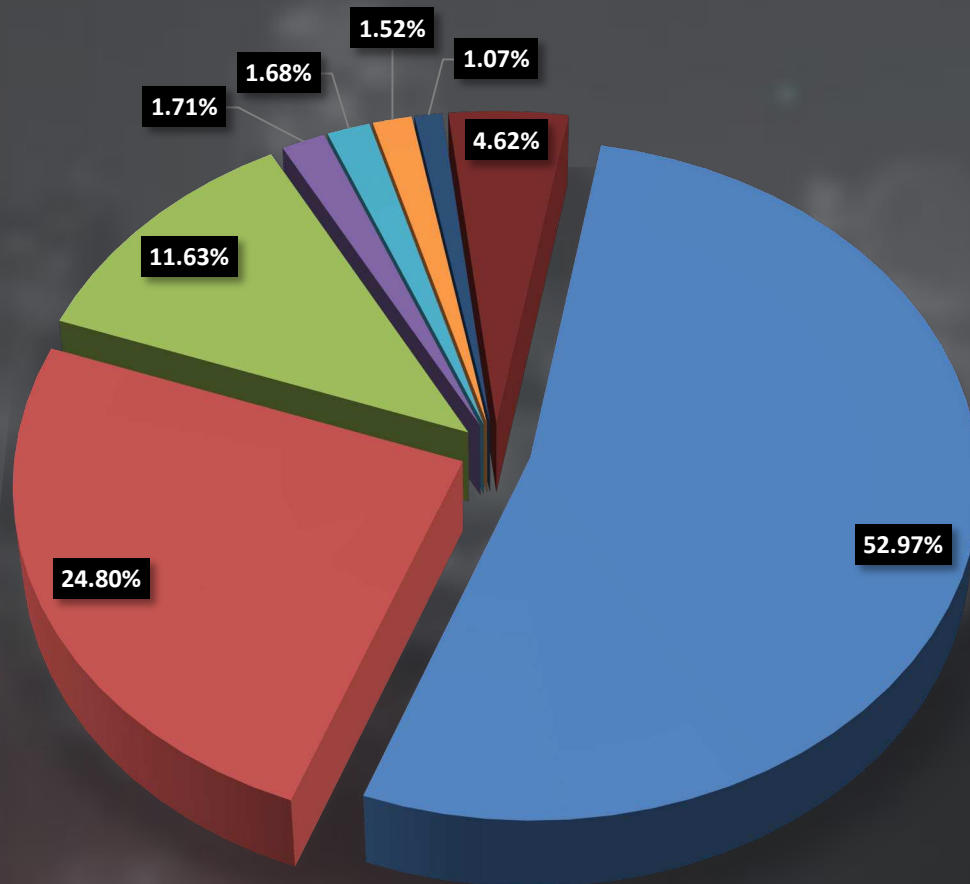
The COMET adopted its Vision 2020 in the Summer of 2012 and its COMPASS Strategic Plan in Summer of 2015.

The COMPASS - A Five Year Guide To Transit In the Midlands can be viewed in its entire at [www.CatchTheCOMET.org](http://www.CatchTheCOMET.org).

- Mobility vs. Transit
- Electric, Clean Fuels
- Passenger Amenities
- Short Range Transit Plan
- Penny Renewal



# Member Counties Contribution%



- Richland County  
(Less Forest Acres, Eastover, Irmo & Columbia)
- Columbia
- Lexington County  
(Less Cayce, West Columbia, Batesburg/Leesville, Chapin, Lexington and Springdale)
- Cayce
- West Columbia
- Newberry County  
(Less Newberry and Little Mountain)
- Lexington
- Less Than 1%:  
Little Mountain, Chapin, Eastover, Lexington County Delegation, Batesburg/Leesville, Newberry, Springdale, Richland County Delegation, Irmo, Forest Acres

Details on page 55 of budget packet



# Lexington County Contributions

Lexington County Transit Services Split						
	FY 19-20	10% Increase Amount	FY 20-21	% Split		
Lexington Medical Center	\$ 10,050.00	\$ 1,005.00	\$ 11,055	5%		
Cayce	\$ 30,150.00	\$ 3,015.00	\$ 33,165	14%		
West Columbia	\$ 30,150.00	\$ 3,015.00	\$ 33,165	14%		
Springdale	\$ 10,050.00	\$ 1,005.00	\$ 11,055	5%		
Lexington County	\$ 127,500.00	\$ 12,750.00	\$ 140,250	59%		
Chapin	\$ -	\$ -	\$ 454	0%	2% of Route 93X	
Lexington	\$ -	\$ -	\$ 2,128	1%	10% of Route 97	
Batesburg-Leesville	\$ -	\$ -	\$ 4,548	2%	45% of Route 97	
	<b>\$ 207,900.00</b>	<b>\$ 20,790.00</b>	<b>\$ 235,820</b>	<b>100%</b>		
<b>Soda Cap Connector Contribution</b>						
West Columbia	\$ 10,000.00	\$ 1,000.00	\$ 11,000	100%		
	<b>\$ 10,000.00</b>	<b>\$ 1,000.00</b>	<b>\$ 11,000</b>			
<b>Route 92X Split</b>						
Lexington County	\$ 21,741.00	\$ 1,087.05	\$ 22,828	33%		
Nephron*	\$ 21,741.00	\$ 1,087.05	\$ 22,828	33%		
Richland County Penny*	\$ 21,741.00	\$ 1,087.05	\$ 22,828	33%		
	<b>\$ 65,223.00</b>	<b>\$ 3,261.15</b>	<b>\$ 68,484</b>			



The END...

Thank you for your undivided  
attention.

Any Questions???

